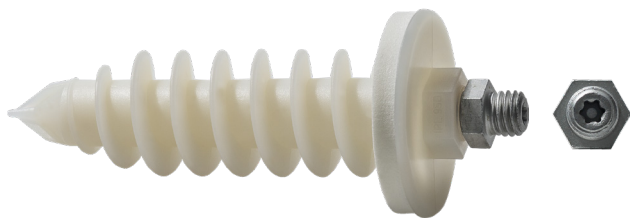


Insulation plug IPL 95DS

Advantages



- Perfect solution for fastening downpipes in ETICS: simple, flexible, fast and adjustable!
- Direct fastening into the insulation material - no thermal bridge
- Pre-mounted special threaded stud: ideal distance of 30 mm of the rainwater downpipe from the wall; adjustment of further 25 mm possible
- Pre-assembled and weather resistant EPDM sealing ensures clean sealing against driving rain up to wind force 11 (violent storm), tested according to DIN EN 1027, no reworking required
- Self-drilling (ETICS plaster ≤ 7 mm) and robust nylon plug, ageing resistant
- Special threaded stud made out of stainless steel A2 or zinc flake coating for optimal corrosion resistance



Approvals and certificates



Tested for driving rain tightness by the
Prüfzentrum für Bauelemente (Germany)

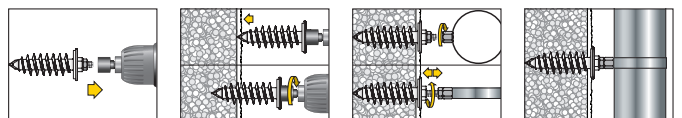
Suitable building materials

Very suitable



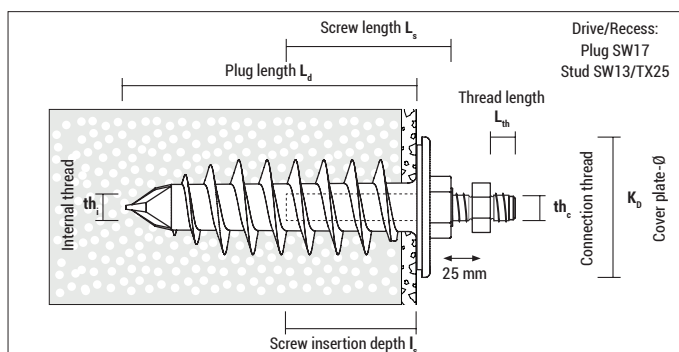
- External Thermal Insulation Composite Systems (ETICS)
- Hard foam boards
- Polystyrene boards
- Heraklith boards
- Wood fibre insulation boards (pre-drilling: 13 mm, HSS-drill or wood drill recommended)

Mounting



- The IPL 95DS can be installed with a hexagon SW17 (recommended), hexagon SW13 socket or TX25 bit
- The special threaded stud can be adjusted up to 25 mm.
- Tip: If the plug should rotate, fixate it with a wrench SW17.

Insulation plug IPL 95DS



IPL 95DS, zinc flake coated

Type	Art-No	L_d [mm]	I_s [mm]	$th_i \times L_s$ [mm]	$th_c \times L_{th}$ [mm]	K_D [mm]	Material threaded stud	€/ 100 pcs	[pcs]	[pcs]
IPL 95DS M8	ZG895IPLDS4	95	20 - 50	M10 x 60	M8 x 8	44,5	Zinc flake coating		4	80
IPL 95DS	ZG95IPLDS4	95	20 - 50	M10 x 60	M10 x 8	44,5	Zinc flake coating		4	80

Packed by 4 pcs incl. installation instruction in a bag



IPL 95DS, stainless steel A2

A2
STAINLESS
STEEL

Type	Art-No	L_d [mm]	I_s [mm]	$th_i \times L_s$ [mm]	$th_c \times L_{th}$ [mm]	K_D [mm]	Material threaded stud	€/ 100 pcs	[pcs]	[pcs]
IPL 95DS M8 A2	X895IPLDS4	95	20 - 50	M10 x 60	M8 x 8	44,5	Stainless steel A2		4	80
IPL 95DS A2	X95IPLDS4	95	20 - 50	M10 x 60	M10 x 8	44,5	Stainless steel A2		4	80

Packed by 4 pcs incl. installation instruction in a bag



IPL 95D

Type	Art-No	L_d [mm]	I_s [mm]	$th_i \times L_s$ [mm]	Drive	K_D [mm]	€/ 100 pcs	[pcs]	[pcs]
IPL 95D	995IPLD	95	20 - 50	M10 x 60	SW17	44,5		20	160

Loads and dimensions

Type	Applications in Polystyrene EPS [PS15, PS20] F_{rec} [kN]	Applications in Polystyrene XPS F_{rec} [kN]	Special threaded stud	Screw insertion depth I_s	
				min [mm]	max [mm]
IPL 95DS / IPL 95D	0,14	0,28	Total length 60 mm Thread inside the plug: 50 mm	20	50

F_{rec} : Recommended load in all directions incl. safety factor of 5